

# Brainboxes Change Control Policy

Thank you for choosing brainboxes. This document describes Brainboxes change control policy. The change control policy applies to 3 classes of product: off-the-shelf, embedded and frozen. There are differences in how Brainboxes treats each class.

We know how important change control is to you, so any changes we make outside of this document’s scope will be highlighted via a PCN (Part Change Notification).

The latest version of this document will always be available from:

<https://www.brainboxes.com/regulatory-declarations>

Document Version	Checked By	Date
0.9	TL	2023/07/27

## Table of Contents

- 1. Standard Products: off-the-shelf .....2**
  - Hardware .....2
  - Software.....2
- 2. Embedded Products: off-the-shelf.....3**
  - Hardware .....3
  - Software.....3
- 3. Frozen Products.....4**
  - Hardware .....4
  - Software.....4
- 4. Custom Products .....4**
- 5. Part Change Notifications.....4**

## 1. Standard Products: off-the-shelf

We guarantee that all of our off-the-shelf products will remain available for a minimum of 10 years from the initial launch date.



*3-digit and 4-digit part codes: e.g. ED-588, SW-504, ES-279, SW-5016*

### Hardware

- No changes will be made to the interface through which you, the customer, connect and interact with the product: outer dimensions, location and size of mounting holes, DIN rail adapters, location, colour of LEDs, and location of connectors.

NB. We may ADD mounting holes/LEDs/alternative connector options, but none will be changed or removed.

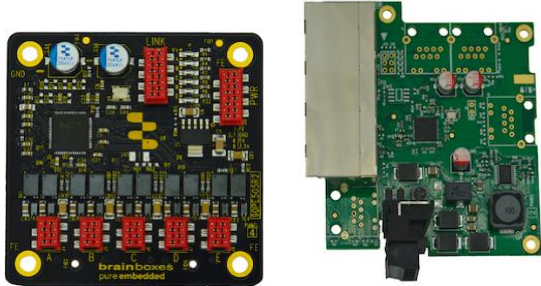
- Changes may be made to the type, supplier, decals, markings, dimensions and location of components such as PCBs, passives and ICs, only where this will not affect functionality, the exterior interface, or conformance testing results.
- Brainboxes reserve the right to change branding, labels, markings, and colours without notice.

### Software

- All software functionality detailed on the product datasheet will remain. Future changes that add to product capability may occur, i.e., fixing existing bugs and/or adding new functionality.
- Software branding, colours, and menus are subject to change without notice, only where this does not affect functionality.
- Public-facing APIs will not be reduced or removed, although they may be deprecated.
- New APIs may be added and existing APIs may be added to.

## 2. Embedded Products: off-the-shelf

We guarantee that all of our off-the-shelf embedded board products will remain available for a minimum of 10 years from the initial launch date.



*3-digit and 4-digit part codes: e.g. PE-505, SW-104*

### Hardware

- No changes will be made to the interface through which you, the customer, connect and interact with the product: outer dimensions, location and size of mounting holes, DIN rail adapters, location, colour of LEDs, and location of connectors.

NB. We may ADD mounting holes/LEDs/alternative connector options, but none will be changed or removed.

- 3D CAD diagrams will clearly mark a designated area of the board where changes that will not affect functionality, the exterior interface, or conformance testing results, may be made. The potential changes within this area may include, but not be limited to, the type, supplier, decals, markings, dimensions and location of components such as PCBs, passives and ICs.
- Brainboxes reserve the right to change branding, labels, markings, and colours without notice

### Software

- All software functionality detailed on the product datasheet will remain. Future changes that add to product capability may occur, i.e., fixing existing bugs and/or adding new functionality.
- Software branding, colours, and menus are subject to change without notice, where this does not affect functionality.
- Public-facing APIs will not be reduced or removed, although they may be deprecated.
- New APIs may be added and existing APIs may be added to.

### 3. Frozen Products



*5-digit and 6-digit part codes: e.g. PE-50501, SW-10402, SW-501605*

Codes can be assigned on request whereby the following options will become available:

#### Hardware

- Selective design freeze: key components such as PCBs and ICs will be fixed to a specific MPN (manufacturer part number). Other components, such as passives of the same spec, can be multi sourced.
- Complete design freeze: all components, passives, connectors and PCBs will be single sourced from validated agreed manufacturers and fixed to a specific MPN (as determined by the tested/validated board.)

#### Software

- Selective design freeze: specific components and or functionality will be frozen at a specific version.
- Complete design freeze: software/firmware will only ship at the version agreed.

The long-term availability of 5-digit and 6-digit part codes is typically 5 years from signed agreement with brainboxes.

N.B. Extended timeframes are possible based on an analysis of our supply chain and agreement with customer.

### 4. Custom Products

Brainboxes can customise our off the shelf products to meet your needs, please get in touch.

### 5. Part Change Notifications

Brainboxes produces part change notifications for all PCB revisions and enclosure revisions, if these fall within scope of our standard policy, then they are available on request. All other PCNs are available through:

Sign up to our PCN email notification feed: <https://eepurl.com/iwCf72> emails will come from: [pcn@brainboxes.com](mailto:pcn@brainboxes.com)