

Brainboxes USB2Serial Apple Mac OSX Installation Guide



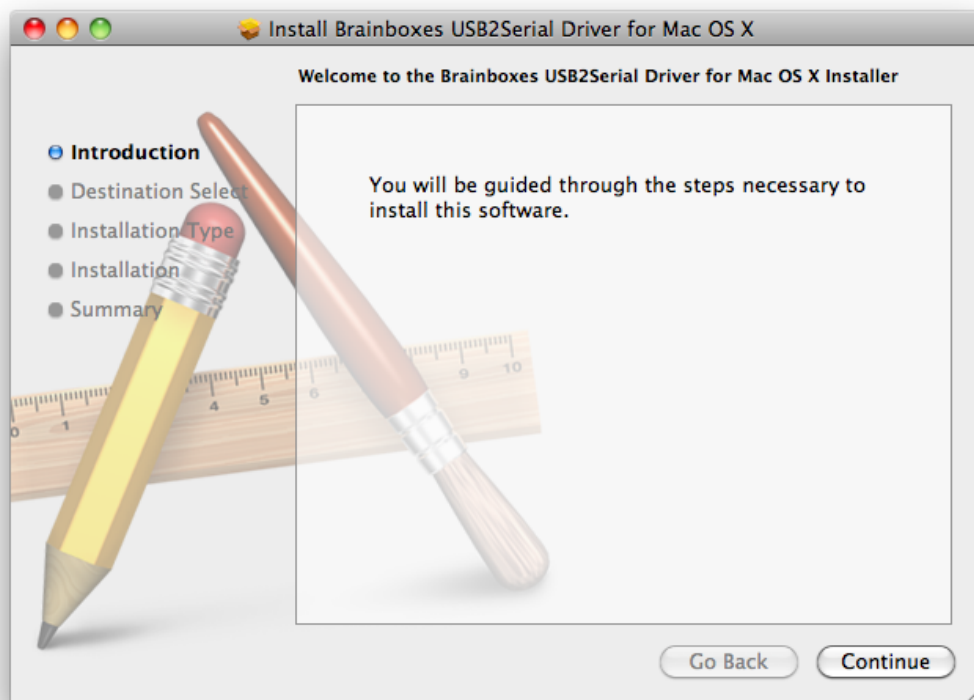
1. Installing your Brainboxes USB2Serial Card

Copy “BrainboxesUSB2Serial.pkg” to a folder on your Mac and open it



BrainboxesUSB2Serial

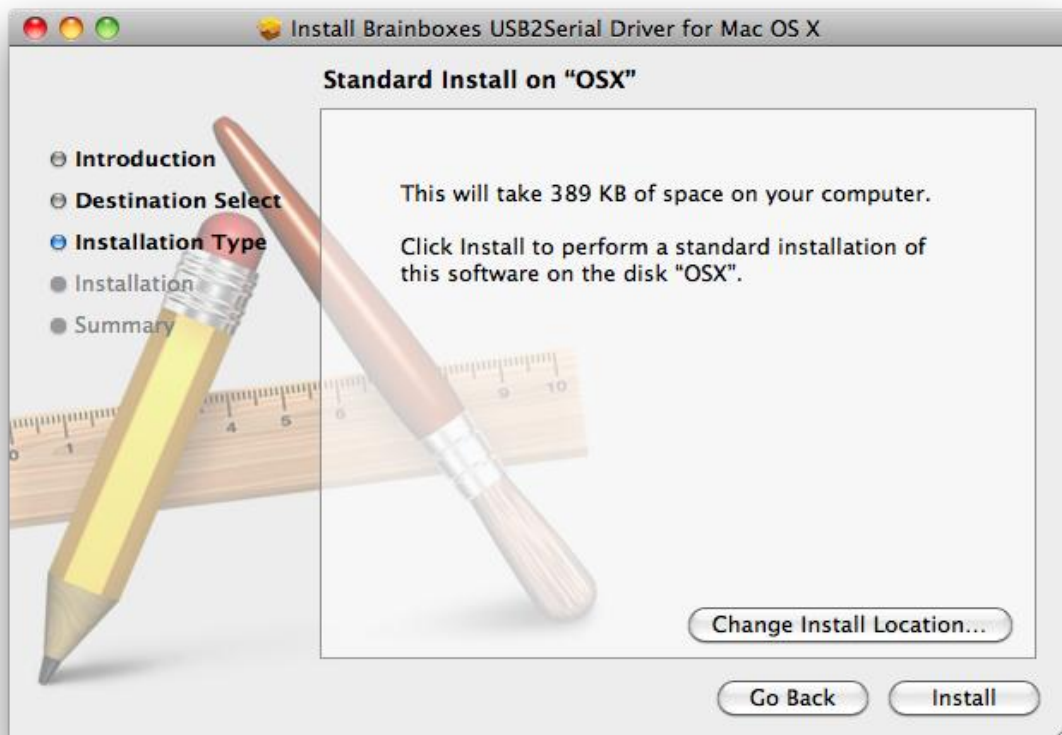
Click *Continue* on the introduction page.



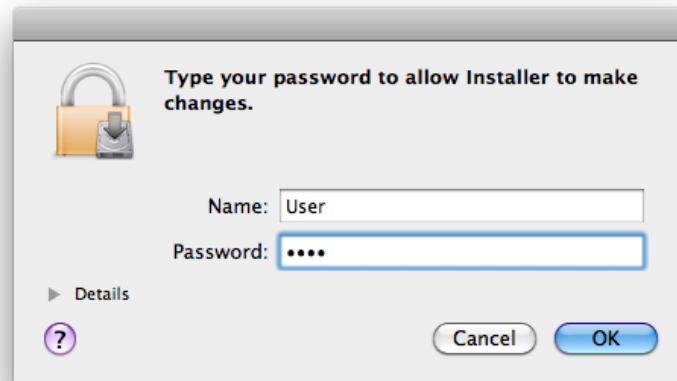
Select the disk where you want the Brainboxes driver to be installed



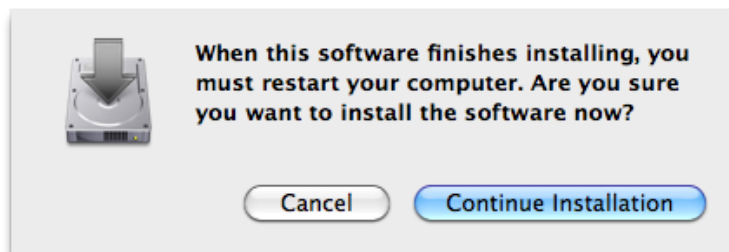
Click the *Install* button to start the installation process.



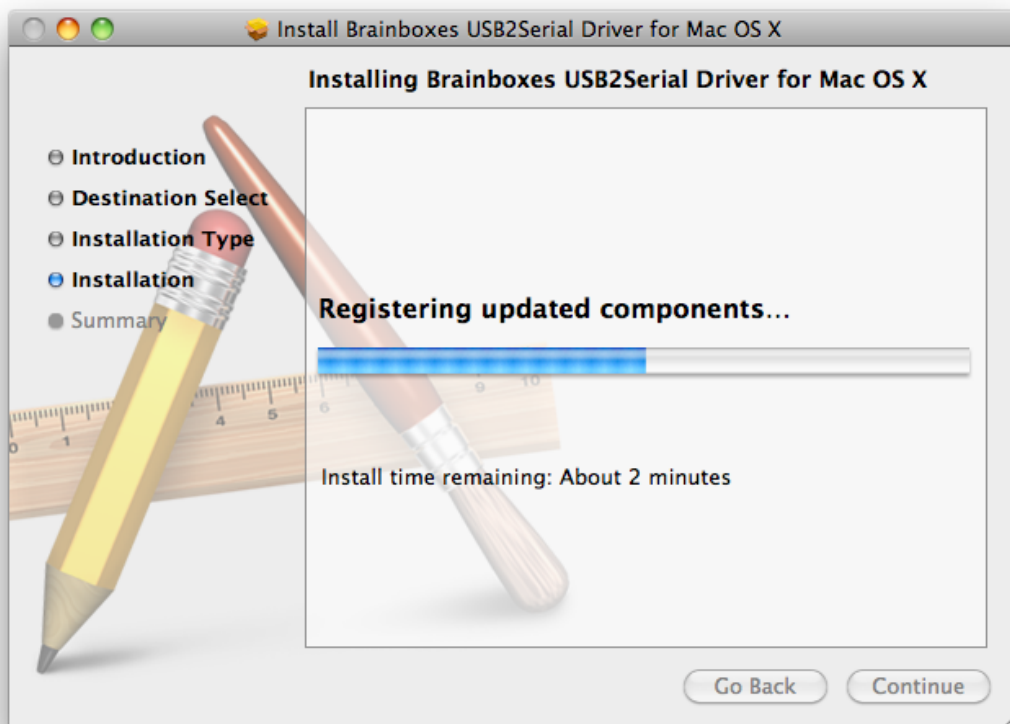
Enter your password if you are prompted.



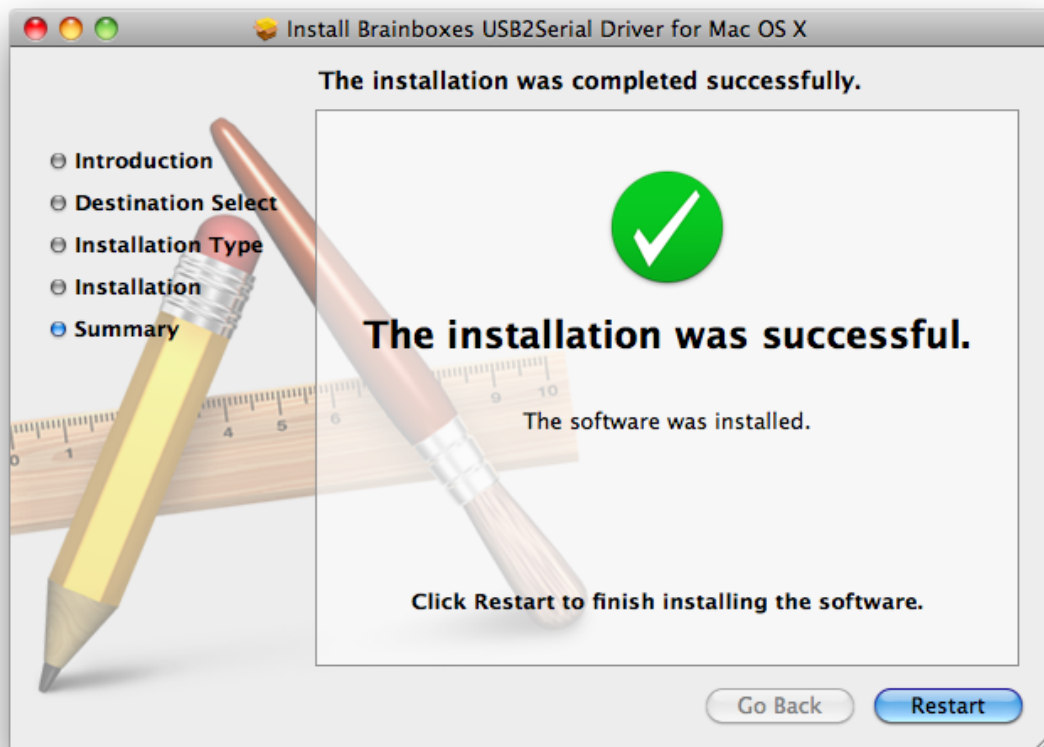
You will then see a message box telling you a restart is required once the installation completes



The driver will then be installed.



There will then be a message telling you that the installation was successful.



You will then need to restart to complete the driver installation.