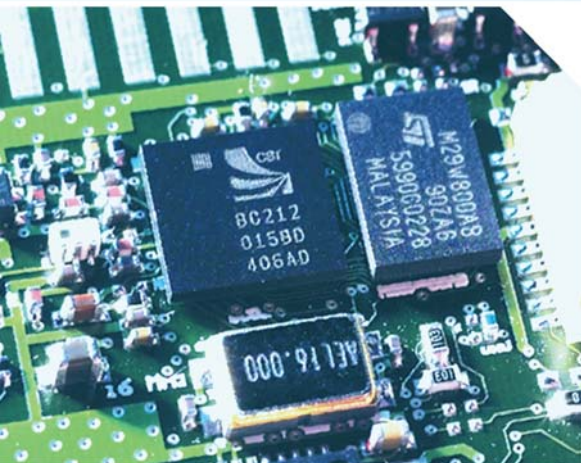




BL-521 & BL-730

CLASS 1 RS232 BLUETOOTH ADAPTOR

'WIRELESS SOLUTIONS ENGINEERED TO EXCEED EXPECTATIONS'



Features

- Class 1 Bluetooth device operating at 14dBm
- Suitable for ANY device with serial port
- Handshaking CTS/RTS & DTR/DSR
- Range, Office: 20m Field: 200m subject to local environment conditions
- Integral Antenna
- Upgradeable onboard flash memory for latest Bluetooth Features
- 4 ways to Configure
- Up to 1.0 Megabaud RS232
- 9 Pin female adaptor included

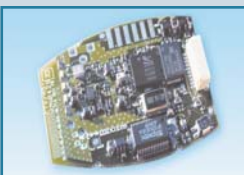
Click on each feature to find similar products

Options



Class 1 RS232 Bluetooth adaptor: BL-521

Class 1 RS232 Bluetooth converter Module for OEM: BL-730



Class 1 devices see: BL-830 and BL-819

TEL: +44 (0) 151 220 2500

Description

Award winning Brainboxes RS232 Adaptor allows any device with an RS232 port to communicate with another Bluetooth device without the need for any additional software.

Ideal for Bluetooth enabling 'dumb' RS232 devices such as dataloggers etc. Based on fully tested Bluetooth silicon, allowing communications at the full Bluetooth data rates. Integral Antenna.

This class 1 Bluetooth device operates at 14.4dBm, making it one of the leading Bluetooth RS232 Adaptors in the market today.

Software

Four configuration modes tailored to suit every environment:

- o Configuration Utility (for Windows)
- o Remote Configuration Over Bluetooth Link
- o Command line Configuration
- o Bulletin Board Configuration

Also included full product documentation and troubleshooting guide.

Find out about Brainboxes excellent Configuration Utility Software Features: [Click Here](#)



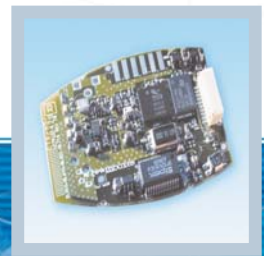
ORDER

Description

CLASS 1 BLUETOOTH RS232 ADAPTOR
CLASS 1 BLUETOOTH RS232 CONVERTOR MODULE

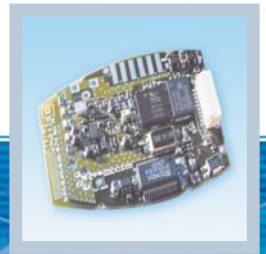
Code

BL-521
BL-730



CLASS 1 BLUETOOTH RS232 ADAPTOR

Product Code BL-521 & BL-730																																																			
Bluetooth General																																																			
Bluetooth Qualification	1.2 Qualified																																																		
Bluetooth Radio																																																			
Class Of Device	Class 1																																																		
Radio Frequency	2.4GHz																																																		
Integral Antenna	Yes																																																		
Receiver Sensitivity	0.00%																																																		
Output Power	18.5 dBm																																																		
Operating Distance (Typical) Metres*	Field: 200m Office: 20m																																																		
Bluetooth Settings																																																			
Max Transfer rate (Kb/s)	up to 723																																																		
Configurable Local Device Name and Device Class	Yes																																																		
Pairing Options	Enable/disable/link key expiry/2 proximity modes																																																		
Client and Server Mode	Yes																																																		
Configurable Discoverability, Security mode and PIN number	Yes																																																		
PICONET & SCATTERNET capable	Yes																																																		
PARK and SNIFF mode	Yes																																																		
Factory Reset	Yes																																																		
Serial Port Settings																																																			
Baud Rate (Kb/s)	244 - 1,000,000																																																		
Data Bits	8																																																		
Parity	Odd, Even, Mark Space																																																		
Stop bits	1 or 2																																																		
Flow Control	RTS/CTS , DTR/DSR																																																		
<table border="0"> <tr> <td></td> <td>Female</td> <td>Male</td> <td>Female</td> <td>Male</td> </tr> <tr> <td>Pin 1</td> <td>N/C</td> <td>N/C</td> <td>5</td> <td>4</td> </tr> <tr> <td>Pin 2</td> <td>TXD</td> <td>RXD</td> <td>3</td> <td>2</td> </tr> <tr> <td>Pin 3</td> <td>RXD</td> <td>TXD</td> <td>1</td> <td></td> </tr> <tr> <td>Pin 4</td> <td>DSR</td> <td>DTR</td> <td></td> <td></td> </tr> <tr> <td>Pin 5</td> <td>GND</td> <td>GND</td> <td></td> <td></td> </tr> <tr> <td>Pin 6</td> <td>DTR</td> <td>DSR</td> <td></td> <td></td> </tr> <tr> <td>Pin 7</td> <td>CTS</td> <td>RTS</td> <td></td> <td></td> </tr> <tr> <td>Pin 8</td> <td>RTS</td> <td>CTS</td> <td></td> <td></td> </tr> <tr> <td>Pin 9</td> <td>N/C</td> <td>N/C</td> <td>9</td> <td>8</td> </tr> </table>		Female	Male	Female	Male	Pin 1	N/C	N/C	5	4	Pin 2	TXD	RXD	3	2	Pin 3	RXD	TXD	1		Pin 4	DSR	DTR			Pin 5	GND	GND			Pin 6	DTR	DSR			Pin 7	CTS	RTS			Pin 8	RTS	CTS			Pin 9	N/C	N/C	9	8	
	Female	Male	Female	Male																																															
Pin 1	N/C	N/C	5	4																																															
Pin 2	TXD	RXD	3	2																																															
Pin 3	RXD	TXD	1																																																
Pin 4	DSR	DTR																																																	
Pin 5	GND	GND																																																	
Pin 6	DTR	DSR																																																	
Pin 7	CTS	RTS																																																	
Pin 8	RTS	CTS																																																	
Pin 9	N/C	N/C	9	8																																															
Bluetooth Security																																																			
Encryption	'None', 'Point to Point' or 'Point to Point and Broadcast'																																																		
PIN Authentication	PIN: Select from list or enter custom (16 character limit)																																																		
Security Levels	Low, Medium & High (Security Mode 1,2 & 3)																																																		
General																																																			
Power Source	External Power Device: 200mA @ 5V																																																		
LED's	status LEDs: Power, Tx, Rx																																																		
Power Consumption	Depends on usage, more info CLICK HERE																																																		
Weight	68g																																																		
Size WxDxH (mm)	40 x 80 x 22 (plus 180mm cable and connector) BL-521 34 x 44 x 2 BL-730																																																		
RS232 connector	9 pin male (female adaptor supplied)																																																		
Interface																																																			
OS Compatibility	This device is compatible with any product with a serial port																																																		
Configuration	Windows Utility software or Remote/terminal Config																																																		
Awards	 Winner Microsoft Tech Ed 2005, Mobile Computing Europe: Bluetooth CompactFlash and Bluetooth Serial Connectivity Winner 2005 European Electronics Industry Awards: Manufacturer of the Year																																																		
Approvals & Accreditations	 UL, CE, FCC, Bluetooth Approved (not BL-730, approval required for integrated systems)																																																		
Box Contents	Bluetooth RS232 Adaptor (BL-521) / Bluetooth RS232 convertor module Power Supply (BL-521) Shell connector and crimps (BL-521) CD with Utility software, manual, troubleshooting guide and datasheet Quick Start Guide																																																		
OEM option	Available for bulk buy OEM																																																		
Product Support	Lifetime Email and Phone Support from fully qualified, friendly staff 40 hours a week																																																		
Warranty	3 years																																																		
Made In	 Manufactured in the UK by Brainboxes Winner 2005 European Electronics Industry Awards Manufacturer of the Year																																																		
Customisable	Brainboxes operate a "Perfect Fit Custom Design" policy for volume users More Info: CLICK HERE																																																		



CLASS 1 BLUETOOTH RS232 ADAPTOR

Glossary: Product Features Explained

Bluetooth RS232 Adaptor Configuration Utility

Brainboxes Bluetooth RS232 Adaptors have 4 ways to be configured: Configuration Utility, Bulletin Board, Remote Config or Command Line. Shown here is our simple yet complete Configuration Utility, which allows full customisation of a Brainboxes Bluetooth RS232 Adaptor.

Usability that speaks for itself

Bluetooth Device Class

There are 3 classes of Bluetooth device defined to suit different needs:

Class 1 - Long Range

Maximum Output Power of 100mW (20dBm)

Class 2 - Medium Range

Maximum Output Power of 2.5mW (4dBm) most common

Class 3 - Short Range

Maximum Output Power of 1mW (0dBm) very rare

A value of distance cannot be explicitly stated for each device class; every user environment is slightly different, and affects the signal in different ways. The best way to compare devices operating range is by comparing Output Power. A device with a larger output power will be able to communicate with other devices over a further distance. Most Brainboxes devices are class 1 devices with a very powerful Power Output, Brainboxes Bluetooth Class 1 devices have one of the most powerful Bluetooth radios in the industry - 14dBm!



CLASS 1 BLUETOOTH RS232 ADAPTOR

Brainboxes' Service

"Brainboxes offers free lifetime support for ALL customers."



We aim to provide industry leading support for our customers. Our highly trained and helpful support engineers sit and work closely with the product designers, developers, and testers to ensure an in-depth knowledge of the products. Support can be found by emailing support@brainboxes.com or calling: +44 (0)151 220 2500 during UK office hours.

Support website: www.brainboxes.com/support/index.asp

"Brainboxes offers 3 year 'no quibble warranty' on all Bluetooth products."

If, for whatever reason, your Brainboxes Bluetooth device does become dysfunctional Brainboxes are happy to replace it thanks to our "3 year no quibble warranty". Peace of mind for your investment.

Brainboxes' Kaizen

"Brainboxes constantly strives to achieve higher standards for the benefit of customers."



'Kaizen' is a Japanese term meaning 'continuous improvement'. Kaizen has been implemented throughout Brainboxes, resulting in significant improvements to our products and our customer service, as illustrated by the development of our own custom ASIC "LYNX" and our new lifetime warranty. As part of this ongoing process, in 2004 we embarked on 'Lean' and '6 Sigma' programs which are successfully increasing productivity and efficiency in all areas of the company. **More Info:** [Click Here](#)

What Can I do with Bluetooth?

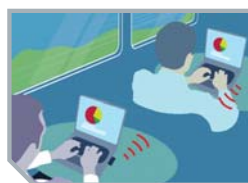
Bluetooth makes the sharing and exchange of information between mobile or static devices as simple as possible. Whether at home, on the move, or in the office it can be used for networking, sharing files, synchronizing information, email, Internet access, printing, and more. In industry it can be used to wirelessly control equipment and machinery - perfect for servicing inaccessible devices.



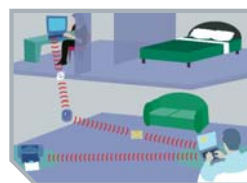
Connect **wirelessly** to a Bluetooth printer to easily **print** copies of your documents



Use Bluetooth in test or manufacturing to **control and monitor** equipment



Create instant **ad-hoc networks** to share files and information



Connect to the **Internet** from anywhere at **home** via a Bluetooth broadband modem



Email anywhere by connecting your laptop or Pocket PC to your Bluetooth phone